



Type RO10V02

Class 8965 Reversing Hoist Contactors meet the small space requirements found in electrical hoists, light duty cranes, door operators, and related products. They are designed to perform in the short periods of joggling

experienced in hoist service. Note that these contactors must be mounted upright on the vertical plane; the contactors will not operate properly when mounted in any other position.

Table 16.255: AC Reversing/Hoist Contactors—600 Vac Maximum

No. of Poles	Horsepower Ratings				Power Terminals	With▲ Jumper Straps	Without▲ Jumper Straps
	115 V 1Ø	230 V 1Ø	230 V 3Ø	460/575 V 3Ø		Open Type	Open Type
3-Pole Polyphase	1	1-1/2	3	3	Quick Connect	RO10◆	RO11◆
					Pressure Wire■	RO12◆	RO13◆

▲ Jumper straps connect the line side power terminals of the same phase between the forward (up) and reverse (down) contactors in common; i.e. L1 to L1, L2 to L2 and L3 to L3.

■ Coils rated 120 Vac or less are supplied with quick connect terminals

only.

◆ Voltage code must be specified to order this product. Refer to standard voltage codes shown in the coil table below.

Table 16.256: Miscellaneous Hoist Contactor Kits For Use With Class 8965

Type	Series	Description	Class	Type	Series	Description	Class	Type
RO10 RO11 RO12 RO13	A & B	Armature Kit	9998	RP1▼	C	Armature Kit	9998	RP2▼
		Contact Carrier	Order as Part Number 3100206050			Contact Carrier	Order as Part Number 3100208150	

★ CP10 discount schedule.

▼ One armature per kit.

Note: See page 16-116 for replacement contact kits.

Table 16.257: Auxiliary Contacts Separate Module

Description	Terminals	Class 9999 Type
1 N.O. Each Side	Quick Connect	R10
	Screw	R12
1 N.C. Each Side	Quick Connect	R11
	Screw	R13

Table 16.258: Coil Table

Voltage 60 Hz	Voltage 50 Hz	Voltage Code	Replacement Part Number
24-	—	V01	3100240319□
120	110	V02	3100240340□
208/220	—	V21	3100240047◇
240	220	V03	3100240049◇
480	440	V06	3100240058◇★
600	550	V07	3100240060◇

△ CP10 Discount Schedule.

□ Tape wound coils, 2 per package.

◇ Molded coil, 1 per package.

★ Suitable for 440 V 50 Hz applications.

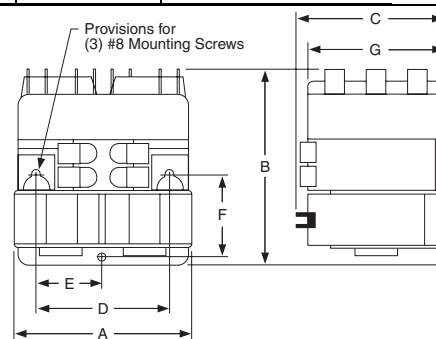


Table 16.259: Approximate Dimensions (3 Poles per Contactor)

Type	A	B	C	D	E	F	G
RO10, 11	3.31 84	3.31 84	3.03 77	2.69 68	1.34 34	1.56 40	2.66 68
RO12, 13	3.31 84	3.69 94	2.69 68	2.69 68	1.34 34	1.56 40	2.66 68

Table 16.260: Cross Reference—Obsolete Devices

Obsolete Device		Replacement Device		Auxiliary Contact Required		Obsolete Device		Replacement Device		Auxiliary Contact Required	
Class	Type	Class	Type	Class	Type	Class	Type	Class	Type	Class	Type
8702 or 8965	HO3	8965	RO12	—	—	8965	RO2	8965	RO10	9999	R10
	HO4		RO12	9999	R12		RO2S1		RO11	9999	R10
	HO5		RO12	9999	R13		RO2S2		RO10	9999	R10
	HO6		RO12	—	—		RO3		RO10	9999	R11
	HO7		RO12	9999	R12		RO3S1		RO11	9999	R11
HO8	RO12	9999	R13	RO3S2	RO10		9999		R11		
8965	RG2S1	8965	RO10	9999	R10		RO4		RO10	9999	R11
	RG5S1		RO12	9999	R12		RO4S1		RO12	—	—
	RG5S2		RO12	9999	R12		RO5		RO12	9999	R12
	RO1		RO10	—	—		RO5S1		RO13	9999	R12
	RO1S1		RO11	—	—	RO5S2	RO12	9999	R12		
	RO1S2		RO10	—	—	RO6	RO12	9999	R13		
	RO1S3		RO11	—	—	RO6S1	RO13	9999	R13		
	RO1S4		RO10	—	—	RO6S2	RO12	9999	R13		
	RO1S5		RO10	—	—						
	RO1S6		RO10	—	—						

Application Data

Coils Duty: Hoist Duty-H4 Intermittent
Voltage Range: AC coils only +10%,-15% of nominal
Burden Inrush 76 VA, Sealed 27 VA

Approvals

UL Component Recognized: File E78351, CCN NLDX2
CSA Certified: File LR60905, Class 3211 04

Table 16.261: How to Order

To Order Specify:	Catalog Number		
• Class Number	Class	Type	Voltage/Frequency
• Type Number			
• Voltage and Frequency	8695	RO10	V02